

Spotted Lanternfly (*Lycorma delicatula*) Best Management Practices for Businesses

Learn what Spotted Lanternfly (SLF) looks like. If you are outside the heavily infested area of the City of Winchester and Clarke, Frederick and Warren Counties, please report sightings to your local Extension Office:

<https://ext.vt.edu/offices.html>

Kill any life stages of SLF found.

May – November: Kill Nymphs and Adults - If numbers are low they can be crushed or placed in a container of alcohol, diluted clorox (10%), or hand sanitizer. Larger populations can be treated with a contact or systemic insecticide.

September – May: Scrape egg masses into a plastic bag or container with alcohol, diluted clorox (10%), or hand sanitizer.

Do not park under trees or near bushes in your personal or company vehicles. This includes tractors, trailers or train cars.

Do not store any commodities under trees or near bushes that will be shipped or moved out of the area, including firewood.

Inspect all vehicles, trailers, tractors, or other means of conveyance. Kill any SLF found. Use the Inspection Statement to record your inspection.

Inspect all products, packaging, and containers for SLF life stages, including firewood. Kill any SLF found. Use the Inspection Statement to record your inspection.

Keep vehicle doors and windows closed while parked to avoid hitchhikers, including tractor-trailers.

Manage *Ailanthus altissima*, Tree of Heaven, SLF's favorite host. Remove 90% of all Tree of Heaven on your property and use the remaining 10% as trap trees. Treat the remaining 10% with a systemic insecticide from April thru September.

Be sure to use an herbicide when removing Tree of Heaven. It is a very strong stump and root sprouter so cutting it down will not completely remove the tree. Details for treating Tree of Heaven with an herbicide can be found in this publication:

http://www.dof.virginia.gov/infopubs/Control-and-Utilization-of-Tree-of-Heaven-2019-03_pub.pdf.

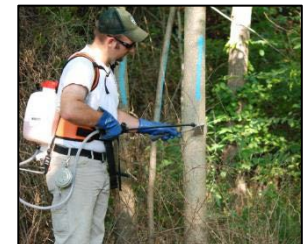
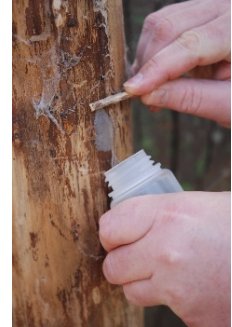
Become familiar with Spotted Lanternfly locations by checking the National Map. Search for [Spotted Lanternfly Cornell Map](#).

Obtain a permit if you are in the SLF quarantined area; the counties of Albemarle, Augusta, Carroll, Clarke, Frederick, Page, Prince William, Rockbridge, Rockingham, Shenandoah, Warren and Wythe Counties, and the Cities of Buena Vista, Charlottesville, Harrisonburg, Lynchburg, Manassas, Staunton, Waynesboro, and Winchester, or if you do business in other SLF quarantined areas. The training to obtain the permit can be found at the Virginia Tech Spotted Lanternfly website:

https://register.ext.vt.edu/search/publicCourseSearchDetails.do?method=load&courseId=210837&selectedProgramAr_eald=25577&selectedProgramStreamId. Or scan the QR Code

The person taking the training will be responsible for training additional staff and insuring the Best Management Practices listed above are followed by the company. After training staff, all inspections conducted must be recorded on an Inspection Statement which must accompany the load that was inspected.

The Virginia SLF permit will be recognized and honored by other states so your product will not be delayed or be denied entrance.



INSPECTION STATEMENT FOR BUSINESSES **SPOTTED LANTERNFLY - STOP THE SPREAD**

The spotted lanternfly is an invasive insect that is putting American agriculture and forests at risk. Join us. Together, we can stop the spread of this destructive pest. Start inspecting for spotted lanternfly today.

By signing this checklist, I am confirming that I have inspected, equipment, and material for Spotted Lanternfly.

Signature: _____ Address: _____ Date: _____

Record your self-inspection:

Life stages of the spotted lanternfly



Egg mass
Sept.-June



Hatched nymph
April-July



Developed nymph
July-Sept.



Adult
July-Dec.

Before you load products that were stored outside check for spotted lanternfly on:

- Pallets
- Containers
- Exposed surfaces of products
- Christmas Trees

Before you leave your company lot or work site, check for spotted lanternflies on your vehicles:

- Doors and side
- Grill
- Bumpers
- Wheel wells
- Roof
- Cargo

Check these items stored outside for pests before moving them to a new location:

- Propane tanks
- Outdoor machinery
- Wooden pallets
- Shipping containers
- Portable Buildings

When you find an egg mass:

- Scrape it off into a plastic bag or container that contains rubbing alcohol or hand sanitizer.

When you find a nymph or an adult:

- Squash, smash or stomp it:

Report any spotted lanternflies you find outside the generally infested area that includes the City of Winchester and Clarke, Frederick and Warren Counties. Please report sightings to your local Extension Office. <https://ext.vt.edu/offices.html>

Remember to park away from trees when possible, and close windows and doors to keep spotted lanternflies out.