



## Spotted Lanternfly (*Lycorma delicatula*)

### What Citizens Can Do

Learn what Spotted Lanternfly (SLF) looks like. If you are outside the heavily infested area of the City of Winchester and Clarke, Frederick and Warren Counties, please report sightings to your local Extension Office: <https://ext.vt.edu/offices.html>

Kill any life stages found.

May – November: Kill Nymphs and Adults, if numbers are low they can be crushed or placed in a container of alcohol, diluted clorox (10%), or hand sanitizer. Larger populations can be treated with a contact or systemic insecticide.

Late September – May: Scrape egg masses into a plastic bag or container with alcohol, diluted clorox (10%), or hand sanitizer.

Buy firewood from a local source and try to burn it all before egg hatch in May.

Do not park cars, trailers, boats, RVs, ATVs, or other means of conveyance under trees or near bushes.

Do not store any items that will be moved out of the area under trees or near bushes.

Become familiar with Spotted Lanternfly locations by checking the National Map: Search for [Spotted Lanternfly Cornell Map](#).

**Inspect all vehicles, trailers, boats, ATVs, RVs, or other means of conveyance** before driving away from areas known to have SLF. Kill any SLF found. Use the self-inspection form to record your inspection.

**Inspect all outdoor furniture, play sets, garden equipment, outdoor machinery, or anything else stored outside** for SLF life stages before leaving a site known to have SLF. Kill any SLF found. Use the self-inspection form to record your inspection.

Keep vehicle doors and windows closed to avoid hitchhikers.

Manage *Ailanthus altissima*, Tree of Heaven, SLF's favorite host. Remove 90% of all Tree of Heaven on your property and use the remaining 10% as trap trees. Treat the remaining 10% with a systemic insecticide from April thru September.

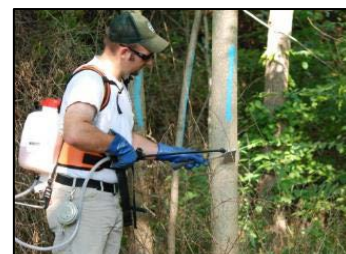
Be sure to use a herbicide when removing Tree of Heaven. It is a very strong stump and root sprouter. Details for treating Tree of Heaven with a herbicide can be found in this publication [http://www.dof.virginia.gov/infopubs/Control-and-Utilization-of-Tree-of-Heaven-2019-03\\_pub.pdf](http://www.dof.virginia.gov/infopubs/Control-and-Utilization-of-Tree-of-Heaven-2019-03_pub.pdf).



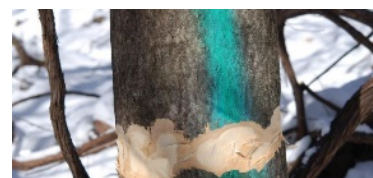
Scrape off life stages into a container.



Do not park or store items near trees or bushes.



Treat some Tree of Heaven with an insecticide.



Treat most Tree of Heaven with an herbicide.

# SPOTTED LANTERNFLY - STOP THE SPREAD

The spotted lanternfly is an invasive insect that is putting American agriculture and forests at risk. Join us. Together, we can stop the spread of this destructive pest. Start inspecting for spotted lanternfly today.

## CHECKLIST FOR CITIZENS

Record your self-inspection.

Date: \_\_\_\_\_ Location of Inspection: \_\_\_\_\_

### Life stages of the spotted lanternfly



**Egg mass**  
Sept.-June



**Hatched nymph**  
April-July



**Developed nymph**  
July-Sept.



**Adult**  
July-Dec.

### Before you leave, check for spotted lanternflies on your vehicles:

- Doors and side
- Grill
- Bumpers
- Wheel wells
- Roof
- Cargo

*Remember to park away from trees when possible and close windows and doors to keep spotted lanternflies out.*

### Check these items stored outside for pests before moving them to a new location:

- RVs, ATVs, boats, hunting stands
- Trailers
- Building materials, landscape stone
- Propane tanks
- Outdoor machinery
- Portable buildings

### Before you load products that were stored outside check for spotted lanternfly on:

- Play sets or toys
- Garden equipment
- Outdoor furniture
- Christmas trees

### When you find an egg mass:

- Scrape it off into a plastic bag or container with rubbing alcohol or hand sanitizer.

### When you find a nymph or an adult:

- Squash, Stomp, or Smash it!

Report any spotted lanternflies you find outside the generally infested area that includes the City of Winchester and Clarke, Frederick and Warren Counties. Please report sightings to your local Extension Office: <https://ext.vt.edu/offices.html>